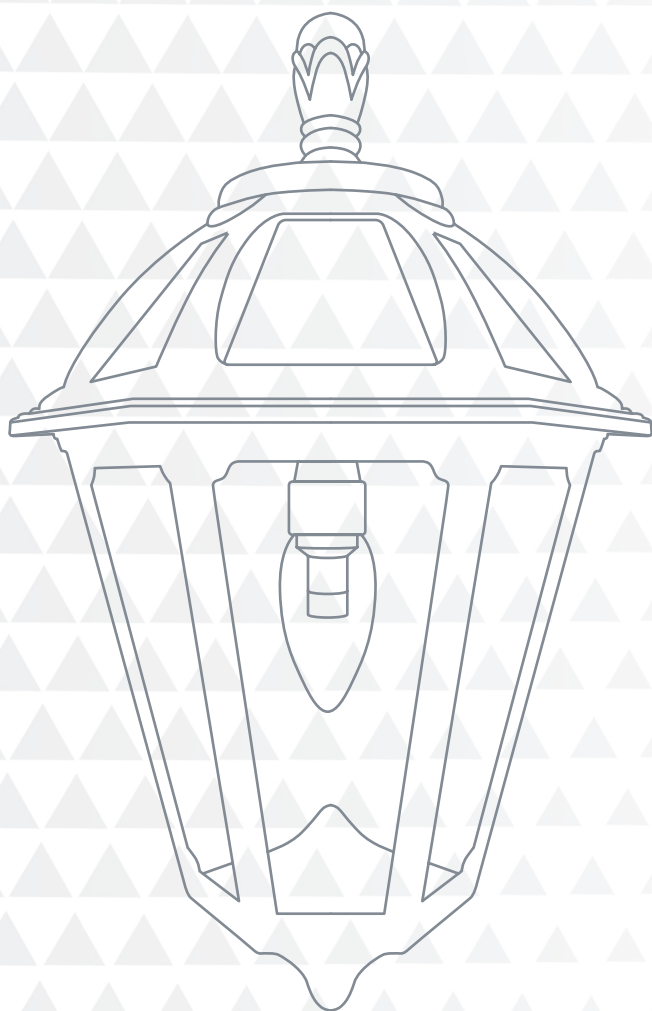


GAMA SONIC[®]

SOLAR LIGHTING



Instruction Manual

POLARIS SCONCE SOLAR LAMP

With GS Solar LED Light Bulb

Model: 179010, 179210

US patent # 7172307, 9458970 / Version 1.1



Please read the instruction manual carefully to obtain the best results from your purchase.

Thank you for your purchase! GAMA SONIC® solar charged lights are brighter and last all night with a typical solar charge. Unique design, superior light output and numerous installation options confirm the outstanding value of our product. **GAMA SONIC®** has been recognized as a worldwide leader in the lighting industry for over 20 years.

Technical Assistance / Warranty Claims / Replacement Parts
Toll-Free number: +1-800-835-4113 (only within the US) or www.gamasonic.com

Visit our website or download the latest version of your instruction manual:
www.gamasonic.com or www.gamasonic.com/user-guides

Rigid Resin Construction

This lamp is made from a Rigid Resin material which is all season weather resistant. It also has UV protection that protects the finish from harsh sunlight. This durable, corrosion resistant construction makes it the perfect lamp for coastal areas.

Solar Lamp Location

For optimum light duration throughout the night, it is very important to mount your solar lamp in a spot where it will receive the maximum amount of direct sunlight throughout the day.

NOTE: For best results, the solar light must be charged in the "ON" position for at least 2 days of full direct sunlight.

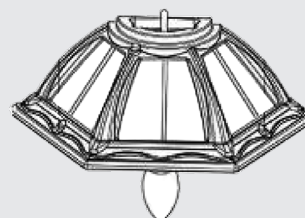


What's In The Box

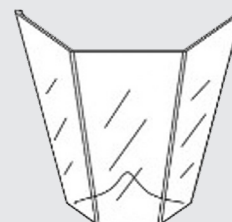
A



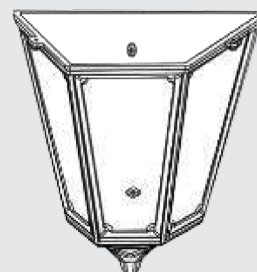
B



C



D



Assembly Instructions

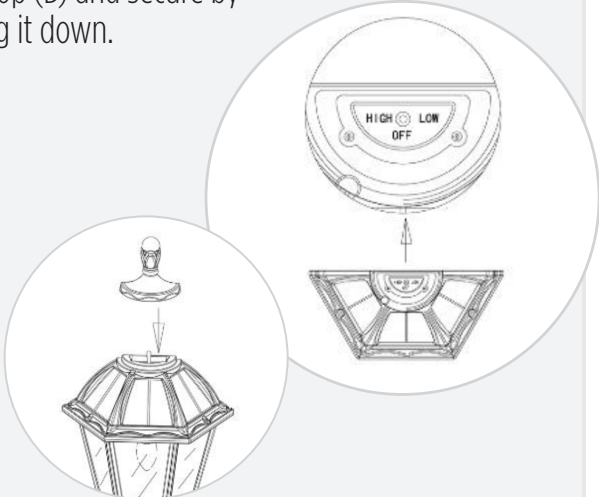
NOTE: The following steps are for reference only. Consult your local hardware store for the best installation method for your surface.

1. Using the fixture (D) as a template, mark two holes in the desired mounting location.
2. Drill a hole in the marked locations and insert the anchors in the holes.
3. Secure the fixture to the wall using the provided screws.



4. Insert the lens (C) into the fixture (D).
 5. Install the GS Solar LED Bulb into the top (B) by twisting it clockwise.
- Note:** make sure to hold the bulb by its base and not the glass.

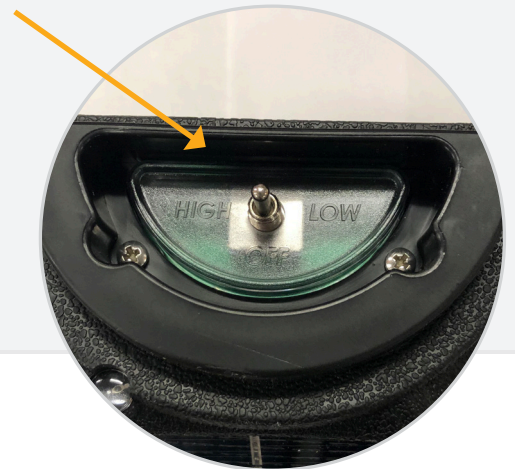
6. Place the top (B) on the fixture (D) and secure it with the provided screws.
7. Turn the lamp on to your desired setting.
8. Place the finial (A) on top of the top (B) and secure by pressing it down.



Operation Instructions

1. Install the GS Solar LED Bulb into the top (B).
2. Locate the operation switch on the upper portion of the top (B).
3. Turn the operation switch to the Low or High position according to your preferences:
Low = Softer light output and longer duration
High = Brighter light output
4. The solar lamp will automatically operate at dusk.

Operation Switch



Replacement Parts

Replacement Batteries and Bulbs are available at
www.gamasonic.com or via
our Toll Free number: +1-800-835-4113

Your Lamp can use the following bulbs:

C37WW10W – included bulb with Warm White LEDs (2700K)

C37BW10W – bulb with Bright White LEDs (6000K)

F30WW05W – Flame bulb with simulated flame LEDs

Your lamp uses the following battery:

GS32V15 - Li-Ion 3.2V/1500mAh

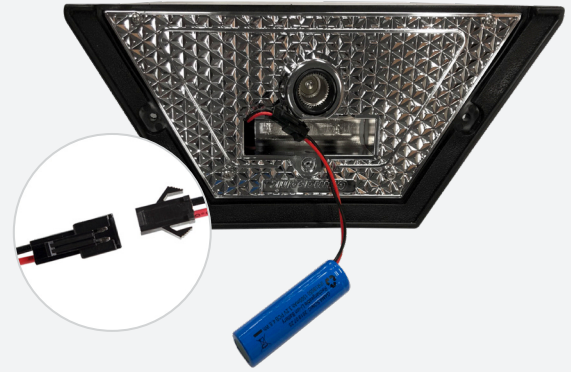


Replacing the battery

GAMA SONIC®
SOLAR LIGHTING

After several years of use, the battery may need replacing.

1. Detach the top (B) from the fixture by removing the two screws.
2. Make sure the switch is in the OFF position and the GS Solar LED Bulb is removed.
3. Remove the screw on the battery compartment door and then remove the door.
4. Remove the battery and unclip the wire.
5. Make sure the new battery is a high quality Gama Sonic 3.2V/1500mAh Li-Ion rechargeable battery with a matching connector.
6. Connect the new battery and re-assemble the lamp by reversing steps 1-3.



Batteries are available for purchase at www.gamasonic.com

WARNING: Do not dispose of Li-Ion batteries in the regular trash, municipal waste stream or by fire as batteries may leak or explode. Do not open, short circuit, or mutilate batteries as injury may occur. Preserve our environment by recycling Li-Ion batteries or disposing of them in accordance with local, State, and federal regulations. Do not mix old and new batteries.

Maintenance

Clean the solar panels regularly with a damp towel to guarantee optimum performance. Do not use any type of solvent for cleaning and be careful not to put too much pressure on the solar panels while cleaning.

Troubleshooting

If your solar light does not come on as expected despite observance of all the instructions, please try the following steps:

1. Make sure that the solar lamp is not being affected by any other light source.
2. Ensure the solar lamp is not positioned in the shade during the day.
3. Check that the batteries are installed correctly.

NOTE: The performance of the solar lamp will vary with the time of year. It will last longer when it has had a full day in the sun rather than a day in overcast weather.



WINTERTIME TIPS: For optimal performance, be sure to remove any snow or debris accumulation from solar panel(s). A solar panel free of debris will charge the batteries much more efficiently.

WARNING: Please keep out of reach of children. Do not dispose of the Li-Ion battery in the regular trash, municipal waste stream or by fire as batteries may leak or explode. Do not open, short circuit, or mutilate batteries as injury may occur. Preserve our environment by recycling Li-Ion batteries or disposing of them in accordance with local, State and federal regulations. Do not mix old and new batteries.