

ShelterCoat™

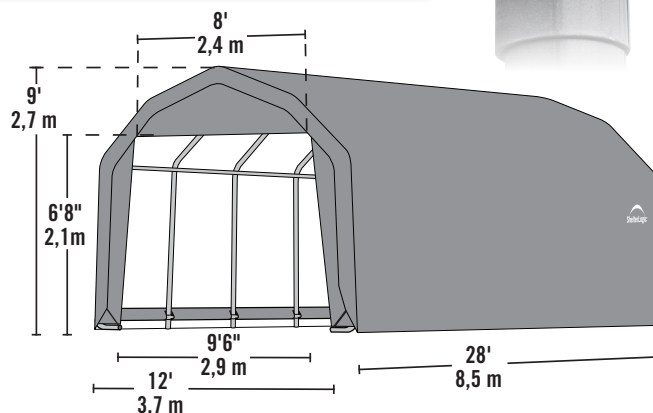
Custom Garage Program

Build your Own All-Season Shelter

Thousands of options to custom fit your storage needs.



12 x 20 x 11' model shown

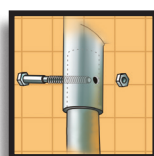


Strong, Sturdy & Durable

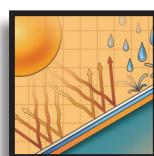
- Patented ShelterLock® frame stabilizers at every rib connection for rock-solid strength.
- Frame constructed of heavy duty 2in. diameter steel.
- Premium powder coat finish protects frame from corrosion and rust.
- Ripstop-tough advanced engineered polyethylene fabric cover protects what's within from the elements.
- Seams are heat welded, not stitched; 100% waterproof.
- Ratchet tensioning system and Easy-Slide cover rails keep the cover smooth and taut.



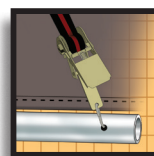
ShelterLock®



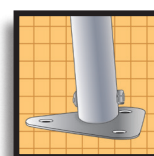
Bolt Frame



Fabric Cover



Ratchet Tensioning



Steel foot plates

12 x 28 x 9 ft.

Unit Specifications:

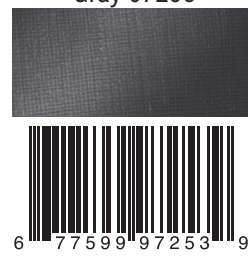
- 417.6 lbs. / 189.4 kg Total Weight
- 2 in. / 5,1 cm All steel frame
- 30 in. / 76,2 cm Auger anchors
- (2) Double-zippered door panels
- (2) Pull-Eaze™ Roll-up Door kits
- (1) ShelterVent™ kit
- Additional anchors sold separately
- Cover, End Panels and Frame are covered by a 1 year Limited Warranty.

Kit Dimensions:

- **Box 1:** 47.2 x 21.7 x 9.6 in.
120 x 55 x 25 cm
- **Box 2:** 47.2 x 18.5 x 10.8 in.
120 x 47 x 28 cm
- **Box 3:** 47 x 17.7 x 5.9 in.
120 x 45 x 15 cm
- **Box 4:** 47.2 x 21.7 x 6.3 in.
120 x 55 x 16 cm
- **Box 5:** 47.2 x 21.7 x 6.7 in.
120 x 55 x 17 cm

9 oz. per m² Polyethylene

Gray 97253



Green 97254

