

PATIO SHED



Model: PS43

Packaging Specs:

Carton Dimensions:

75.1 x 34 x 4.4 in.

190,8 x 86,4 x 11,1 cm

Total Weight: 83 lbs. / 37,7 kg

Pallet Qty: 9 Horiz.

Model: PS53

Packaging Specs:

Carton Dimensions:

75.1 x 34 x 4.4 in.

190,8 x 86,4 x 11,1 cm

Total Weight: 101 lbs. / 45,8 kg

Pallet Qty: 9 Horiz.

Model: PS63

Packaging Specs:

Carton Dimensions:

75.1 x 34 x 4.4 in.

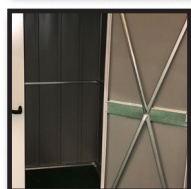
190,8 x 86,4 x 11,1 cm

Total Weight: 110 lbs. / 49,9 kg

Pallet Qty: 9 Horiz.



THE PERFECT SIZE to store patio cushions, grilling gear, gardening tools, outdoor toys, and more!



6x3, 5x3, and 4x3 ft. FOOTPRINTS fit easily on any patio or deck, or in a small backyard space.



WIDE-SWING DOORS with a brushed metal, locking handle.



TALL 6 FT. WALLS, perfect for storing taller items.

ATTRACTIVE 2-TONE AESTHETICS in Flute Gray and Anthracite to compliment many home exteriors.

D.I.Y. ASSEMBLY with pre-cut and pre-drilled parts.



Model	Storage Area square / cubic	Ext. Dimensions WxDxH, in./cm	Door Opening WxH, in./cm	Int. Dimensions WxDxH, in./cm
PS43	12.2 f ² / 1,1 m ²	54.8 x 39.25 x 74.25 in.	30.4 x 69.7 in.	46.5 x 35.6 x 73.7 in.
	74.1 f ³ / 2,1 m ³	139,1 x 99,7 x 188,6 cm	77,2 x 177 cm	118,1 x 90,3 x 187,2 cm
PS53	15.4 f ² / 1,4 m ²	67.5 x 39.25 x 74.25 in.	48.7 x 69.7 in.	62.25 x 35.6 x 73.7 in.
	93.1 f ³ / 2,6 m ³	171,5 x 99,7 x 188,6 cm	123,7 x 177 cm	158,1 x 90,3 x 187,2 cm
PS63	17.6 f ² / 1,6 m ²	75.2 x 39.25 x 86.7 in.	54.5 x 69.7 in.	71.3 x 35.6 x 75.9 in.
	106.6 f ³ / 3 m ³	190,9 x 99,7 x 200,3 cm	138,5 x 177 cm	181 x 90,3 x 192,7 cm